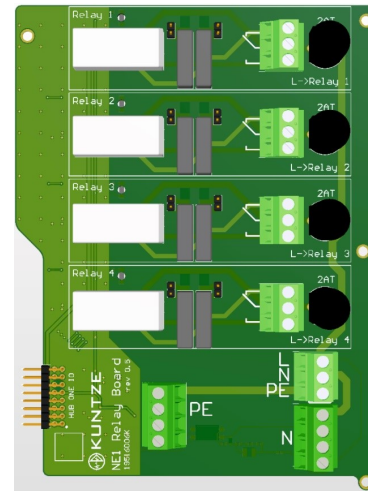


NEON[®] ONE | Relay board - mechanical 4x

General description

The NEON[®] ONE | Relay Board – Mechanical provides 4 mechanical relays for external device control within the NEON[®] ONE platform. Designed for seamless integration with the NEON[®] ONE | HUB, it enables reliable switching of pumps, valves, and other process components. The module ensures stable and interference-free operation, making it ideal for automation and process control applications in industrial and water treatment environments.



Item Number: 19516006K

Technical specifications

Number of outputs	4
Output type	Single Pole Double Throw
Max. voltage	250 V AC/DC
Max. current	6 A per relay, 8 A combined from mains connector
Switching	Mechanical



Kuntze Instruments GmbH
Robert-Bosch-Str. 7a
40688 Meerbusch
Germany

+49 2150 70660
info@kuntze.com
www.kuntze.com